
Unit 7:

Risk Management and Safety



FEMA

Visual 7.1

Unit Terminal Objective

Describe the risk management and safety responsibilities of the Division/Group.



FEMA

Visual 7.2

Unit Enabling Objectives

- **Define risk management and risk assessment.**
- **Describe the risk management processes.**
- **Describe concepts of hazard mitigation.**



FEMA

Risk Management Responsibility



FEMA

Visual 7.4

Risk Management Responsibility (Cont.)

- **The Division/Group Supervisor directs Division or Group Resources to carry out the tactical assignments.**
- **A critical part of this direction includes establishing a risk management process**



FEMA

Risk Management Terms (1 of 5)

- **Hazard - Things within the environment that can cause harm to people or equipment.**
- **Risk - The chances that people take in relationship to the hazard.**



FEMA

Risk Management Terms (2 of 5)

Distinctions between hazards and risks:

- **A hazard does not necessarily put you at risk.**
- **Everything we do exposes us to hazards.**
- **It is how we deal with the hazards that determine the risk.**



FEMA

Risk Management Terms (3 of 5)

- **Hazard Assessment - Identification and evaluation of hazards**
- **Risk Assessment - Identification and evaluation of risks**



FEMA

Risk Management Terms (4 of 5)

Risk Management:

The process of planning, organizing, directing, and controlling the resources and activities of an organization in order to minimize detrimental effects on that organization.



FEMA

Risk Management Terms (5 of 5)

- **Risk Mitigation:**
 - **Specific measures established to reduce or eliminate risks.**
- **Decision Point:**
 - **Go/No-Go decision based on whether risk mitigations established can adequately reduce or eliminate the risk identified.**



Risk Management Model

- 1. Risk Identification**
- 2. Risk Evaluation**
- 3. Risk Prioritization**
- 4. Risk Control Measures**
- 5. Risk Monitoring**



FEMA

Risk Identification



- Identify risks in your assignment.
- Identify risks in overall incident.



FEMA

Visual 7.12



Activity 7.1: Practice Identifying Hazards and Risks

Allotted Time: 30 minutes



FEMA

Visual 7.13

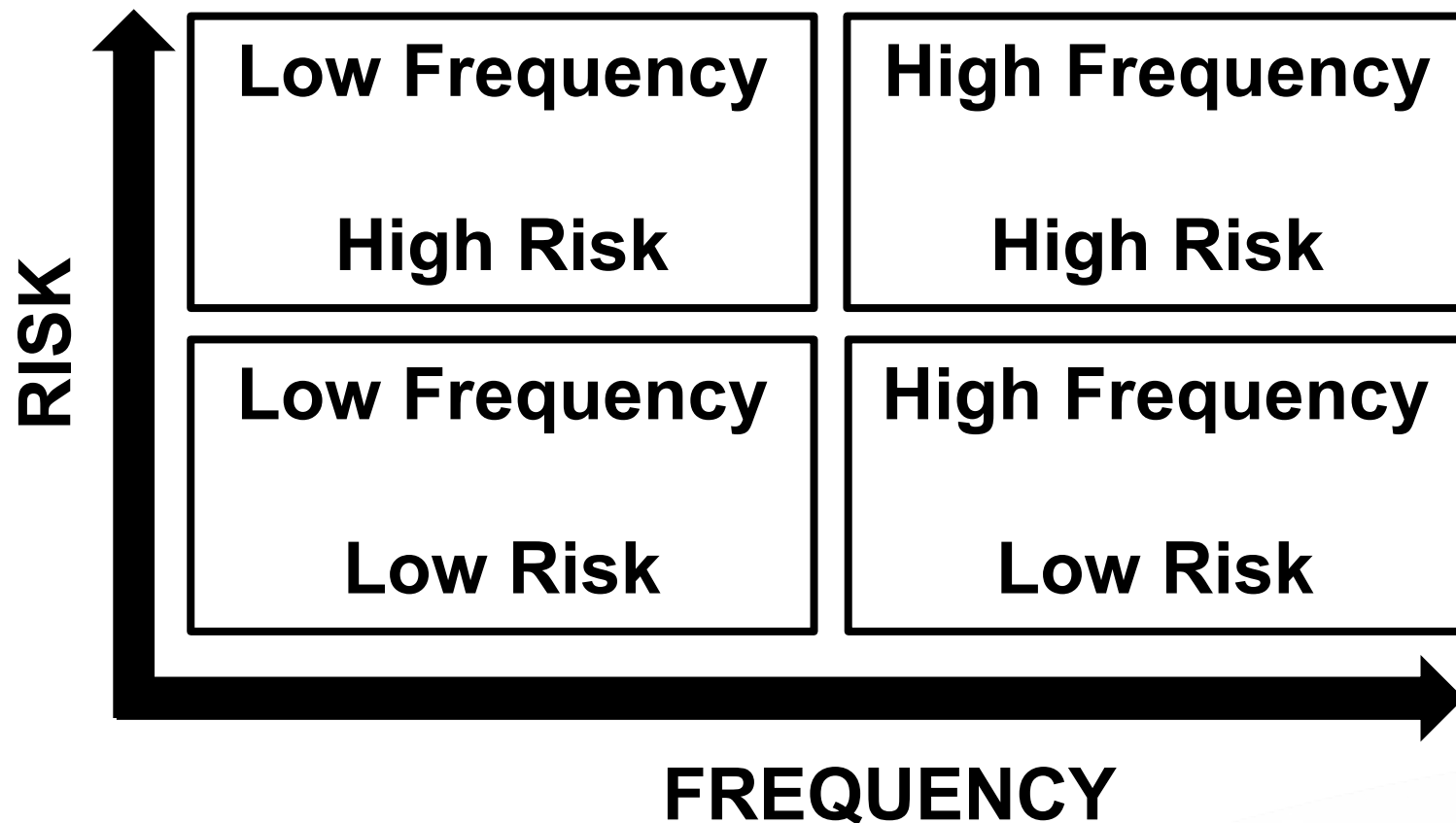
Risk Evaluation

Determine which risks pose greatest threat.



FEMA

Risk Evaluation (Cont.)



Risk Prioritization

- **Determine which risks will be avoided or controlled first.**
- **There is no correct order.**
- **Matrix may help to classify problems.**



FEMA

Risk Control Measures (1 of 3)

- 1. Elimination or removal of hazard**
- 2. Avoidance**
- 3. Use of PPE**
- 4. Environmental controls**
- 5. ICS**
- 6. Personnel accountability system**
- 7. Training and education**



Risk Control Measures (2 of 3)



8. Removal

9. Avoidance

10. Use of PPE



FEMA

Visual 7.18

Risk Control Measures (3 of 3)

11.Environmental controls

12.ICS

13.Personnel accountability system

14.Training and education



FEMA

Risk Monitoring

- **Should be immediate and continuous throughout the incident.**
- **Awareness of accident and injury data will assist the Division/Group Supervisor in hazard and risk identification and mitigation.**



FEMA

Risk Monitoring (Cont.)

- Analysis after significant incidents
- After Action Report



FEMA



Activity 7.2: Perform a Hazard and Risk Assessment

Allotted Time: 45 minutes



FEMA

Visual 7.22

Risk Management Toolbox

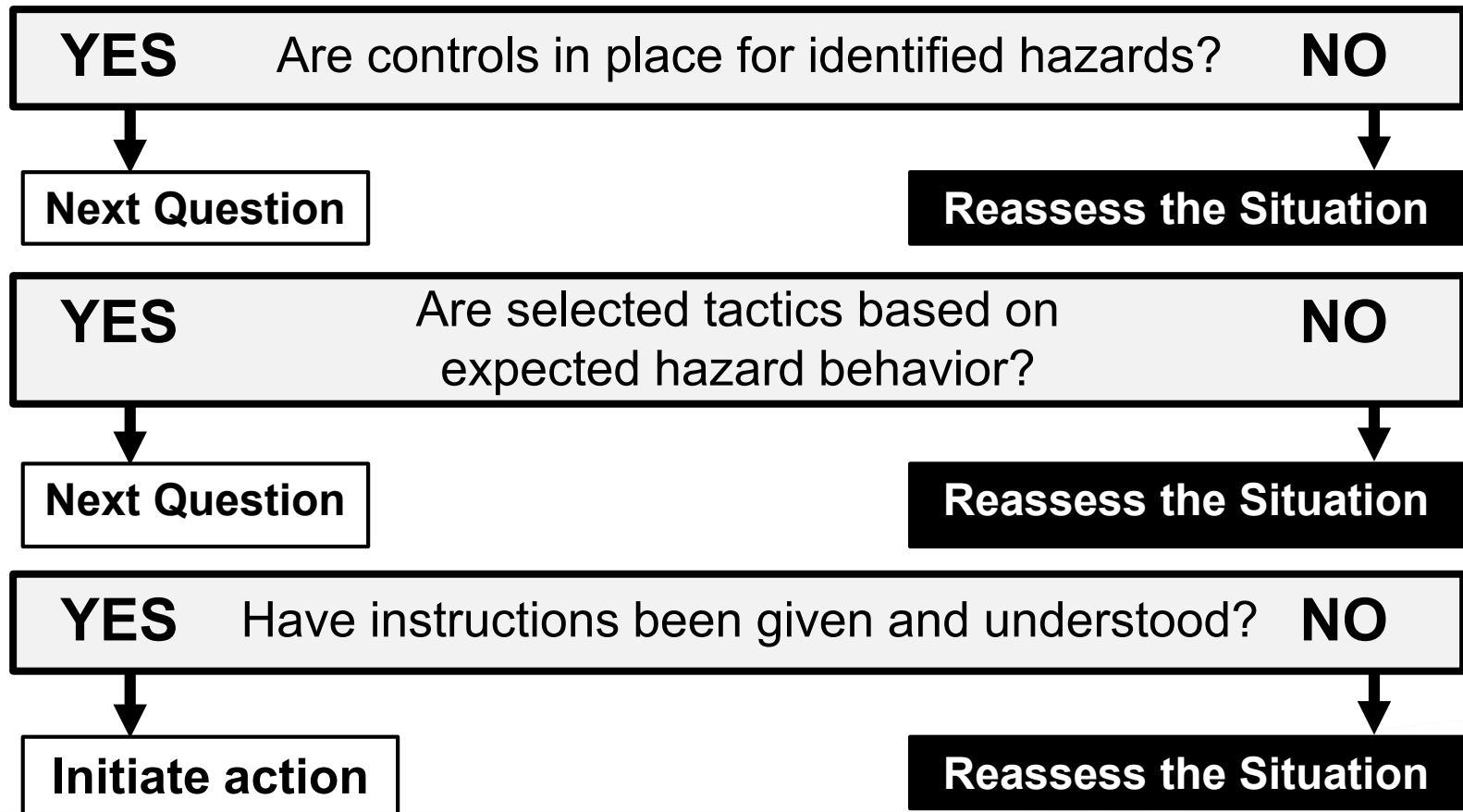
What safety guidelines do you use?



FEMA

Risk Management Process

Decision Point – Go/No Go



Situational Awareness and Shared Situational Picture

A combination of long-held attitudes and knowledge with information gathered from current situation.

- **Building a perception**
- **Accurate and timely new information**

Shared Situational Picture –

- **All individuals assigned to incident must have a common understanding and perspective of situation.**
- **All units assigned to DIVS must have shared situational picture of situation within division.**



FEMA

Barriers to Situational Awareness

- **Fatigue**
- **Time pressure**
- **Inexperience**
- **Overconfidence**
- **Distraction**
- **Supervisory pressure**
- **Peer pressure**
- **Selective perception or bias**

Perception  **Leads to** **Reality = Situational Awareness**



FEMA

Hazardous Attitudes

- **Anti-authority**
- **Impulsive**
- **Invulnerable**
- **Macho**
- **Resignation**
- **Indecision**



FEMA

Key Questions

- **Can personnel work safely?**
- **Do you understand the strategy and tactics?**
- **Has a briefing been held with feedback?**



FEMA

Division/Group Supervisor Safety Commitment

The Division/Group Supervisor must show a personal commitment to safety.

How can this be done?



FEMA

Division/Group Supervisor Safety Examples

- **Stress safety in briefings and one-on-one.**
- **Listen to safety concerns of incident personnel.**
- **Ensure subordinates understand their safety responsibilities.**
- **Visit divisions and incident facilities.**
- **Set examples by wearing appropriate PPE.**
- **Expect the unexpected.**
- **Consider personnel welfare needs.**



Objectives Review

- 1. What is the definition of risk management?
Risk assessment?**
- 2. What are the steps involved in risk management processes?**
- 3. What is hazard mitigation?**



FEMA